

## Eufonio 1

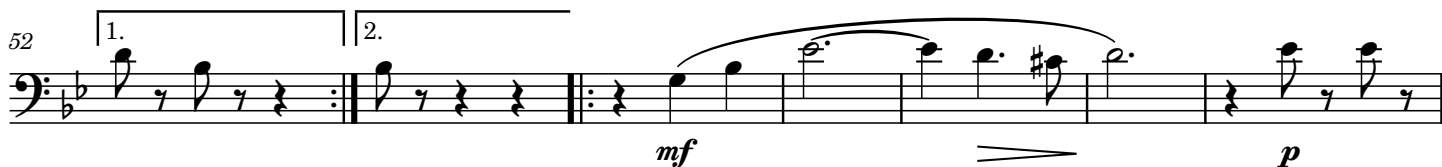
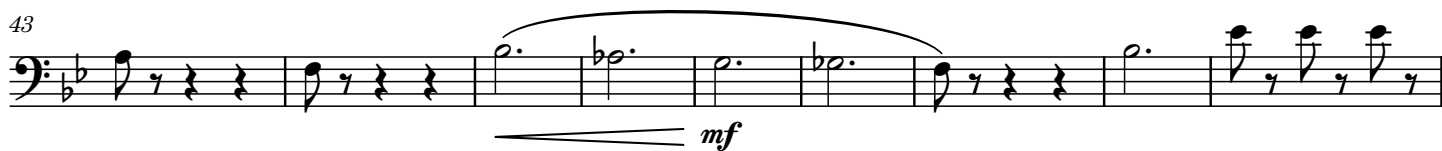
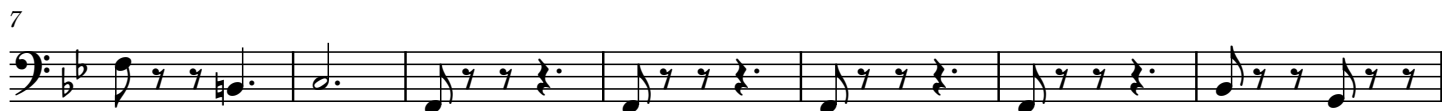
# FOLLIE DI DONNA

Walzer

Durata circa 19'50"  
Grado 4,5

Amilcare Ponchielli (1834 - 1886) Op. 122  
Versione per banda sinfonica di Emiliano Gusperti

Andante moderato (♩ = 60)



66 *p* *f* Walzer n° 2

73

81 *pp*

88 *pp*

98

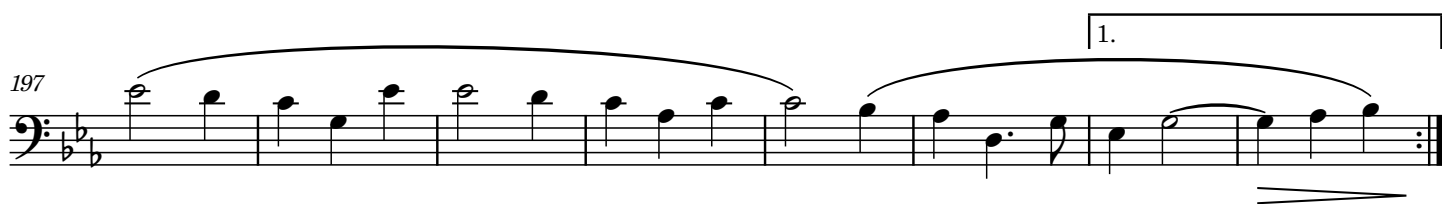
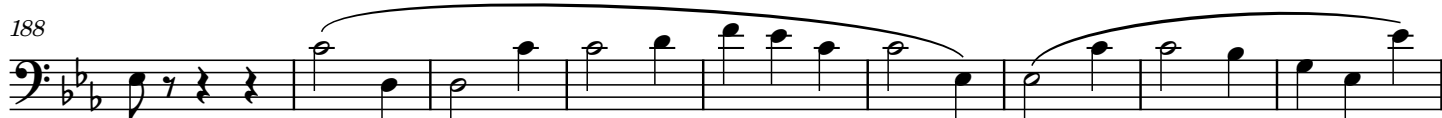
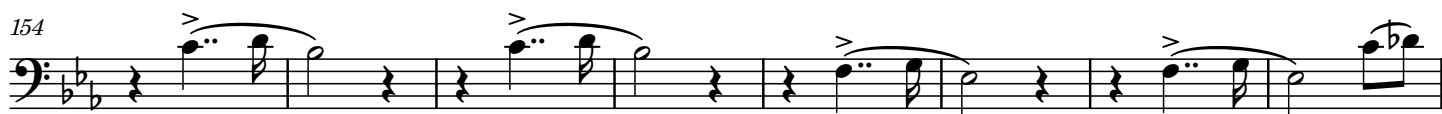
107 Walzer n° 3 *p con espressione* *p* 113-116

118

126 *mf* *pp* 127-131

135-139 *mf* 144-146

## 147 Walzer n° 4



218 *f*

226

234

242

248 *Coda* *pp* *cre* - - - - - *scen* - - - - -

257 *do* - - - - - *ff*

265 *poco rit.*

270 *a tempo* *pp*

277

284

291 *mf* 299-301

302

*mf* *p*

310

*mf* *p*

318 Valzer n° 2

*f*

325

*pp*

333

*pp*

344

352-358

*pp cresc.* *x 2<sup>a</sup>*

367

*ff* *stringendo*

374

381

386

*1*